

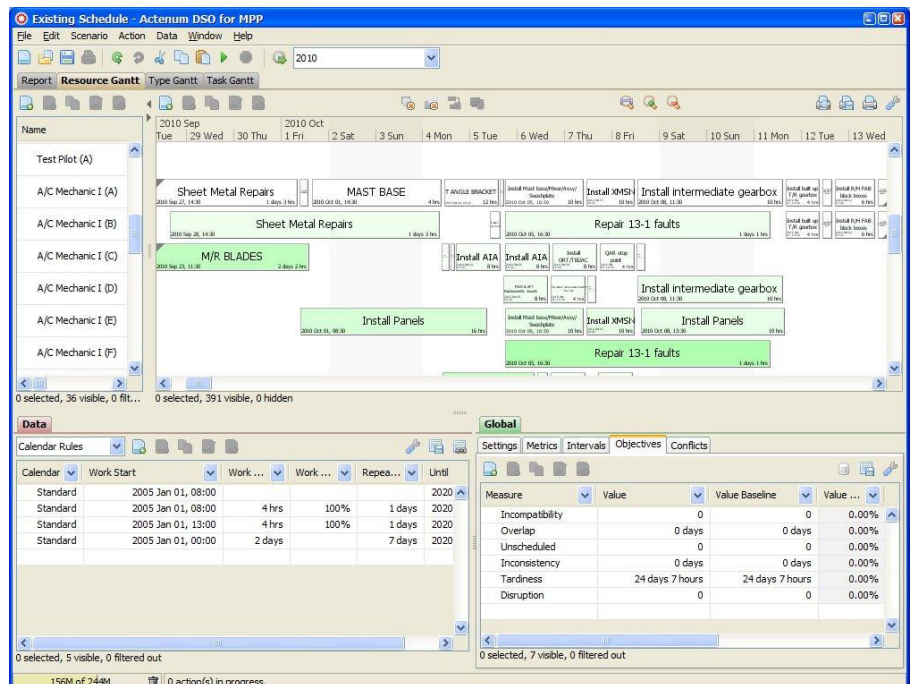
Develop and manage optimized maintenance schedules, rapidly and reliably

DSO/Maintenance saves you time and effort by making it easy to develop and manage optimized maintenance schedules that are aligned with your business objectives, and that deliver maximum equipment uptime and production performance.

DSO/Maintenance features

Designed for the most challenging operational environments, DSO/Maintenance overcomes the limitations of manual scheduling tools and approaches by harnessing both the power of sophisticated optimization technology and your expert knowledge.

As you work with a schedule through its easy-to-use Gantt chart interface, DSO/Maintenance provides real-time feedback—in terms of the impact on your performance metrics such as equipment uptime, costs, and outage risk—so that you can make decisions that are fully-informed and appropriate for your operational situation. And DSO/Maintenance helps you to decide on the most effective responses to the operational changes and disruptions that you encounter during the workday.



About Actenum Corporation

Actenum Corporation is a global software company that provides advanced planning and scheduling solutions to the upstream energy sector. By simplifying and improving the process of assigning resources to activities, we enable our customers to enhance performance, and increase efficiency and profit.

Actenum Corporation

520 - 1385 West 8th Avenue
Vancouver, BC V6H 3V9 Canada

+1.604.681.1262
www.actenum.com

DSO/Maintenance takes into account:

- All of your business and technical constraints;

Application Requirements

Client Workstations

- 2 GHz Pentium CPU
- minimum 1 GB RAM, 40+ GB hard drive
- 100 Mb network connection to server
- MS Windows XP/Vista/Windows 7

Actenum applications may be deployed using Java Web Start, with Java Runtime Environment 1.5, Internet Explorer 4 and higher, and Mozilla web browsers.

Java Web Start is configurable to run on web servers such as Apache, BEA Weblogic, Microsoft IIS, etc. The recommended version for an Apache Server is Apache 2.2.4.

Database Server

- Microsoft SQL Server 2000, 2005
- Oracle 8i or higher
- MySQL 3.23 or higher

- Multiple competing objectives that must be considered when scheduling (for example, cost/outage risk/crew utilization);
- Diverse human and equipment resources, and resource synchronization requirements ;
- Complex availability calendars;
- Multiple geographic locations/remote work locations.

DSO/Maintenance benefits

DSO/Maintenance provides top-line impact through:

- Increased maintenance efficiency and production throughput, together with optimized resource utilization;
- Rapid and strategic decision-making for enhanced recovery from planned and unplanned downtime;
- More effective collaboration between operating units
- Comprehensive scenario evaluation capabilities for handling various contingencies.

Configurable to meet your needs

DSO/Maintenance is designed to address maintenance needs in a wide range of operations through powerful and flexible configuration features. And DSO/Maintenance employs an open architecture that provides for rapid integration with your existing EAM/CMMS application, so that your maintenance schedules are always based on the latest asset information available.

DSO/Maintenance also enables you to create custom reports, and supports the use of other common software tools, such as MS-Project and MS-Excel.

Contact us

To speak to an Actenum representative, or to schedule a demonstration, please contact us at +1.604.681.1262, or info@actenum.com.